



## 2018 Vic Smith Tuesday Night Trials

Organizing Authority: Marina Del Rey Venture MacGregor Fleet <http://mdrvmf.org>

Primary Race Officer: Michael McKinsey [mmc1800@gmail.com](mailto:mmc1800@gmail.com) 760-475-2959

**SERIES 4 of 6 - 5 races - July 24, 31 August 7, 14, 21**

### Sailing Instructions

### ***AFTER RACE FESTIVITIES AT PACIFIC MARINERS YACHT CLUB***



Pacific Mariners Yacht Club is sponsoring the race providing access to ASMBYC marks and allowing us to use their clubhouse for dinner and socializing after the race. Pacific Mariners is providing the Race Committee on the water support for the races, including volunteers, boats and equipment.

Special thanks out to everyone who is helping with the race, please let us know if you would like to be of help with the race or the after race diner.



Garhauer Marine  
(<https://garhauermarine.com/>) is providing end of the season prizes.

#### 1. RULES

- 1.1 This series will be governed by the rules as defined in The Racing Rules of Sailing.
- 1.2 Start sequence rules are changes (see section 9 below)
- 1.3 Rule 32.2 is modified as follows: If the race committee elects to shorten the course it will announce the shortened course over VHF and will provide no other visual or audible signal.
- 1.4 Rule 35 and 63.1 are changed (see 13.1 below)
- 1.4 Spinnakers may not be used inside the harbor.
- 1.5 Running lights are required after sunset and boats not displaying required lights will be disqualified (scored DSQ) this changes rule 63.1.

#### 2. NOTICES TO COMPETITORS

- 2.1 Notices to competitors if any will be posted on the website at <http://mdrvmf.org> the night before each race. If notices are posted any later than the night before they will also be hailed over VHF in the 15 minutes before the first start.

#### 3. CHANGES TO SAILING INSTRUCTIONS

- 3.1 Any change to Sailing instructions will be posted to the website at <http://mdrvmf.org> - updates and changes may be posted up to 8pm the night before any race. Racers are responsible to check for updated instructions. Any changes made after 8pm the night before will be hailed over VHF in the 15 minutes before the first start.

#### 4. SIGNALS MADE ASHORE

- 4.1 No signals will be made ashore. Cancellations and abandonments will be hailed over VHF.

#### 5. SCHEDULE OF RACES

- 5.1 The 5 races in this series will be held on July 24, 31 August 7, 14, 21
- 5.2 The order of starts will be **Performance at 5:55pm, Class A at 6:00pm, Class B at 6:05pm**
- 5.3 The races will start according to the GPS time listed unless the race committee hails over VHF to make changes to the starting times.

#### 6. COURSES

- 6.1 **All marks to be left to port unless noted with an '(s)' after the respective mark.**

**Performance: Start - V - A - J - V - Finish Distance: 6.3 NM**

**Class A: Start - H - J - H - S - H - S(s) - G(s) - Finish Distance: 4.3 NM**

**Class B: Start - H - J - H - S - H - S(s) - G(s) - Finish Distance: 4.3 NM**

- 6.2** The line made between the “no sail” buoys on either side of the main channel once it heads West will be considered a continuing obstruction and no part of the boat will cross this line. Sailing past this line requires 1 penalty turn (see 12.2). This rule is not in effect while rounding a mark if a course change has made one of these a mark in the course.
- 6.3** The center channel buoys other than the “no sail” buoys described in 6.2 and any other mark not specified as part of the course being sailed are not part of the course.
- 7. MARKS**
- 7.1** The **start line** for all classes will be:  
Between SS and an orange flag on the RC Boat. If no RC boat is present, start line will be between SS (to be left to port) and the flag in the middle of the detached breakwater (to be left to starboard).
- 7.2** The **finish line** for all classes will be:  
Enter the marina through the South entrance, with the finish line being between the green light on the south end of the detached breakwater (to port) and a flag on the RC boat (to starboard), which will be anchored near Ballona Creek. If there is no RC boat on station, boats shall note and report their finish times on VHF 71, as they pass the green light (to port), when this light bears 235 degrees magnetic from the helm (note , this will be after rounding the breakwater to enter the south entrance to the marina).
- 7.3** When the course or changed courses refer to marks their location is available on Chart 17 which can be downloaded here: <https://redmatrix.us/cloud/mdrvmf/Course-Chart-17.0.pdf>. Marks not listed on Chart 17 will be as specified in the Sailing Instructions or over VHF.
- 7.4** If a mark designated in the course is not present, the GPS location listed for the mark on chart 17 will be rounded instead as if there was a mark where it was listed. If there is a mark present nearby enough to the GPS location to be identifiable as the mark, the mark will be rounded instead of the GPS location. This changes Rule 34.
- 8. CHECK-IN**
- 8.1** Each boat will check in over VHF prior to the start sequence. Once RC announces it is online on VHF hail “[insert boat name] checking in sailing [insert class] class”. Do not check-in during start sequence, if late check-in after starts end.
- 9. START**
- 9.1** Rule 26 is reinstated for this series.
- 9.2** As per Rule 26 we will be using 5 minute start sequences.
- 9.3** The start signal for each class will be the warning signal for the next class.
- 9.4** The Race Committee may hail a boat as OCS over VHF as well as using the X flag method this changes rule 29.1
- 10. SHORTENED COURSES**
- 10.1** Shortened courses (when hailed on VHF by RC as per 1.3):
- 1) The courses may be shortened to end at any mark on the course. If the course is shortened to a mark you have finished once you have completed rounding the mark.
  - 2) Other course as explained by RC over VHF.
- 11. FINISH**
- 11.1** Finish times are recorded by the RC over VHF, or recorded by a Race Committee member present on the committee boat at the finish. The RC may or may not be present at the finish line, if the race committee is present and makes a sound signal when you cross the finish line, you do not need to hail your finish over VHF as in 11.2 and 11.3.
- 11.2** When you are approximately 30 seconds from finish hail over VHF stating “[insert boat name] Approaching” - please announce your approaching if race committee is present at the finish or not.
- 11.3** When there is no Race Committee member present at the finish line taking finish times, when you have finished hail “[insert boat name] Mark”
- 11.4** Each radio operator will take into consideration that only one radio may transmit at a time and allow a boat that is finishing to hail their mark before transmitting. If two boats are finishing at nearly the same time, explain your relative position to the other boat when you get a chance - wait for their mark to be made and then mark yourself, e.g. “RowBoat Mark - we were 2 seconds behind Cruise Ship”.
- 11.5** Each competitor should also record their own finish time in case there is a problem with VHF transmission, or race committee recording of finish times.
- 11.6** The scorer will use all available information to decide on the most likely finish time and relative positions of the boats and will have final say on the official finish time of each boat. If a digital GPS track of the race for a boat is available (for example from <http://raceqs.com>) this information can be used to calculate finish times.
- 12. PENALTIES**
- 12.1** Rule 44 penalties are in effect (1 turn for breaking rule 31 and 2 turns for breaking one or more rules of Part 2).

12.2 Any part of a boat crossing into the area described in section 6.2 requires a single penalty turn.

**13. TIME LIMITS**

13.1 Any boat not finishing by 20:30 will be scored DNF. This changes rule 35 and 63.1

**14. PROTESTS AND REQUESTS FOR REDRESS**

14.1 Protest forms are available from the primary race officer at the venue listed for the after race meeting. Any boat wishing to file a protest must do so within one hour of finishing by informing the primary race officer of their protest in writing.

**15. SCORING AS STATED IN NOR**

**16. RADIO COMMUNICATION**

16.1 The race committee will communicate with the fleet via **VHF on Channel 71** to make adjustments to the course and communicate with the fleet. Each boat shall monitor channel 71 for information and updates.

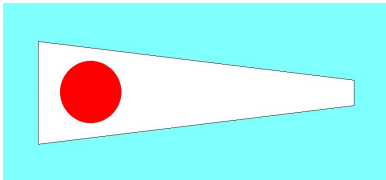
**17. PRIZES AS STATED IN NOR**

**18. DISCLAIMER OF LIABILITY**

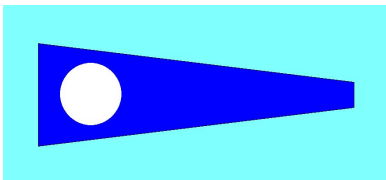
18.1 Competitors participate in this series entirely at their own risk. See RRS 4, Decision to Race. By participating in this series, each competitor agrees to release the race organizers (organizing authority, host yacht club, race committee, protest committee, sponsors, and any others acting in an official capacity for this event) from any and all liability associated with such competitor's participation in this series to the fullest extent permitted by law.

**19. CLASS FLAGS**

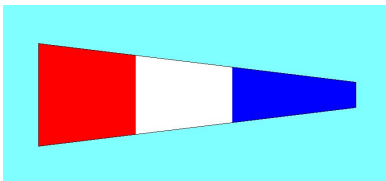
19.1 Class Flags are as follows:



Performance Class is Class 1

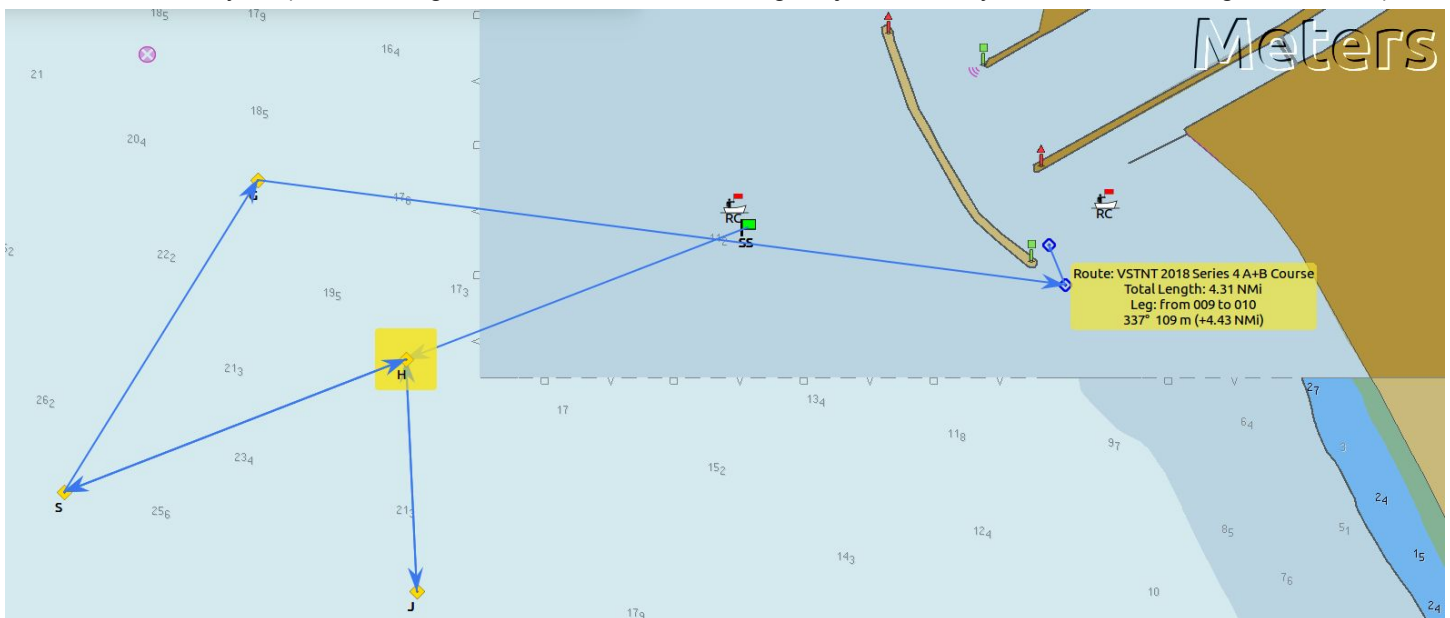


Class A is Class 2



Class B is Class 3

A and B Course Layout (follow sailing instructions above, this image is just for clarity and does not change the course)



Performance Course Layout (follow sailing instructions above, this image is just for clarity and does not change the course)

